

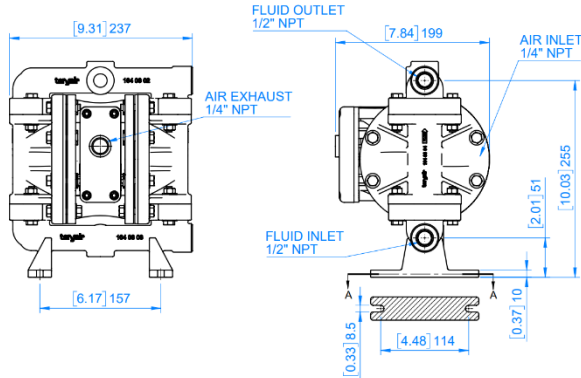


# TECHNICAL DATA

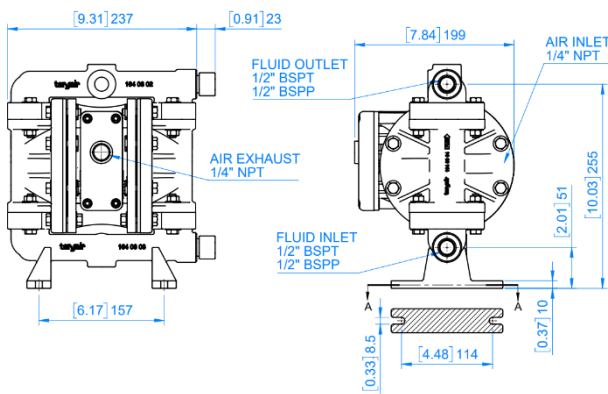
RELEASED: 13/09/2024  
 REVISED:  
 REV: 00

## Teryair 1/2" Diaphragm Pump TeryChem Polypropylene

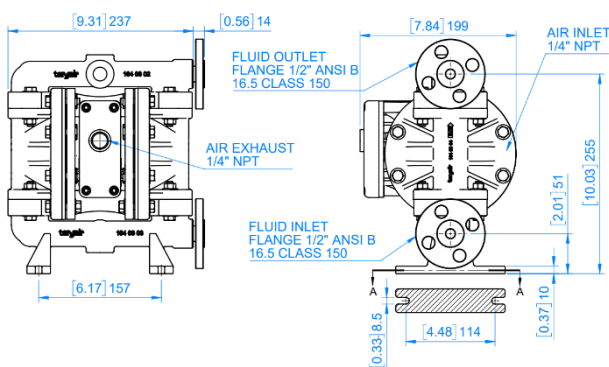
### DIMENSIONAL DATA - NPT



### DIMENSIONAL DATA - BSPT/BSPP

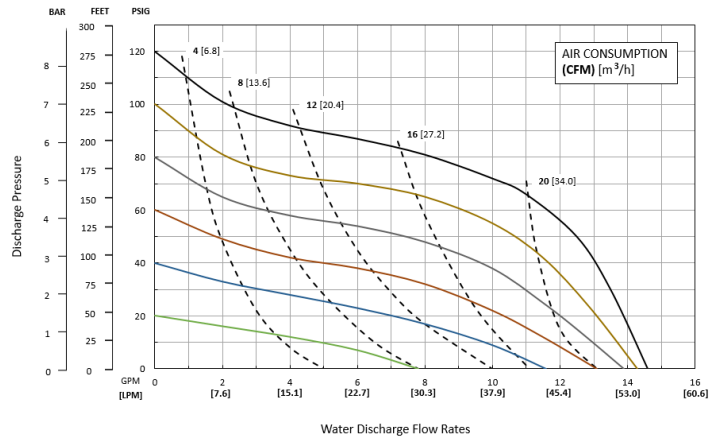


### DIMENSIONAL DATA - FLANGED

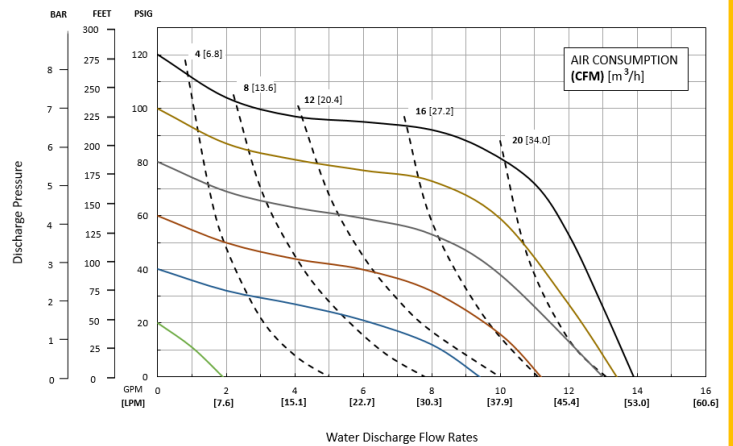


NOTE: Dimensions are shown in [inch] mm

### PERFORMANCE GRAPH SANTOPRENE



### PERFORMANCE GRAPH PTFE



### WEIGHTS & FINISH

Pump Type	Weight	Finish
Polypropylene Construction	8.8 lbs (4 kgs)	RAL 5003 / Panton 541, Blue <span style="color: blue;">■</span>
Polypropylene Construction , Flanged	9 lbs (4.1 kgs)	RAL 5003 / Panton 541, Blue <span style="color: blue;">■</span>

### MATERIAL OF CONSTRUCTION

PARTS	MOC
Wetted Parts	Polypropylene, Polypropylene (30% Glass Filled)
Diaphragms/ Balls	Santoprene PTFE
Seals	Viton Encapsulated PTFE
Ball Seats	Polypropylene
Air Valve Body	Polypropylene (30% Glass Filled)
Piston	Polyacetal
Fasteners	Stainless Steel (304)
O Rings & Seal Rings	Carbon Filled PTFE Buna N

### PERFORMANCE DATA

Ratio	1:1
Air Inlet Pressure Range	10-120 psig (0.7 – 8.0 bar)
Maximum Material Inlet Pressure	10 psig (0.7 bar)
Fluid Outlet Pressure Range	10-120 psig (0.7 – 8.0 bar)
Maximum Flow Rate (Santoprene)	14.0 g.p.m. (53.2 lpm)
Maximum Flow Rate (PTFE)	14.2 g.p.m. (54.1 lpm)
Displacement / Cycle @ 100 psig	0.027 gal. (0.10 lit)
Maximum Particle Size	1/16" dia. (1.6 mm)
Wet Suction (Santoprene)	27.0 ft (8.2 mtr)
Wet Suction (PTFE)	29.0 ft (8.8 mtr)
Dry Suction (Santoprene)	16.1 ft (4.9 mtr)
Dry Suction (PTFE)	13.9 ft (4.2 mtr)

### MAXIMUM TEMPERATURE LIMITS

(Diaphragm/Ball/Seat Material)

Santoprene	-40° to 350° F (-40° to 177° C)
PTFE	40° to 225° F (4° to 107° C)
Polypropylene	32° to 175° F (0° to 79° C)

### PUMP NOMENCLATURE

Position	1	2	3	4	5	6	7	8	9	10	11
Example	TC	15	A	B	X	G	E	X	A	X	X
Example: TC15-PSX-GEX-XXX											
Position 1 Range	Position 2 Size	Position 3 Body	Position 4 Diaphragm/Valve	Position 5 Back up	Position 6 Port	Position 7 Port Position	Position 8 Speciality Code	Position 9 Safety Code	Position 10 Sanitary Code	Position 11 Speciality Code	
TC - Chemical	15 - 1/2"  25 - 1"  40 - 1- 1/2"  50 - 2"	P - Polypropylene	S - Santoprene  O - One Piece PTFE  T - PTFE	S - Santoprene  X - None	G - BSPT  F - Flanged ANSI/DIN  R - NPT  P - BSPP	C - Centre Ported Vertical, See foot note  E - End Ported	P - Pulse Dampener  R - Remote Solenoid Driven  T - Trolley Mounted  X - None	X - None	X - None	S - Speed Controller  C - Cycle Counter  D - Diaphragm Monitoring  X - None	

### MODEL NUMBERS

TC15-PSX-REX-XXX	TC15-PTS-REX-XXX
TC15-PSX-GEX-XXX	TC15-PTS-GEX-XXX
TC15-PSX-PEX-XXX	TC15-PTS-PEX-XXX
TC15-PSX-FEX-XXX	TC15-PTS-FEX-XXX